



Mason Clinic Pediatrics is recognized as a Center of Excellence for Autism by the WA Health Care Authority, meaning that the clinicians have undergone additional training in autism assessment, diagnosis, and treatment. The physicians are supported by medical assistants who have been trained in working with children with special needs, and there are speech and occupational therapists who have undergone specific training for helping to diagnose autism.

GETTING A "SMART" AUTISM EVALUATION IN MASON, WA

★ What is "SMART?"

Teachers, parents, and therapists can refer a child to Mason Clinic-Pediatrics for an autism diagnosis using SMART. The SMART team ensures no duplicate services and that families get needed help. After referral, you meet with one of our doctors, and then you may have further assessments done at Rehabilitation Services. After the results are available, the doctor collects reports from teachers, therapists, parents, and other relatives. After your summary visit, the physician will include a report of the team's findings and recommendations.

★ SMART is much faster than other evaluations in Washington!

Without the SMART team at Mason Clinic-Pediatrics, families would need to be seen at a distant center. Through the Center of Excellence program, the team is supported by specialists from Seattle Children's Hospital. This reduces wait times for assessment and families receive the help and support their children need.

At Mason Clinic-Pediatrics, the process can start in just a few months without long drives. This means that if your child has autism, you can get help and support faster.

CONTACT US! 360-426-2653
Mason Clinic-Pediatrics



HOW TO USE THIS BROCHURE:

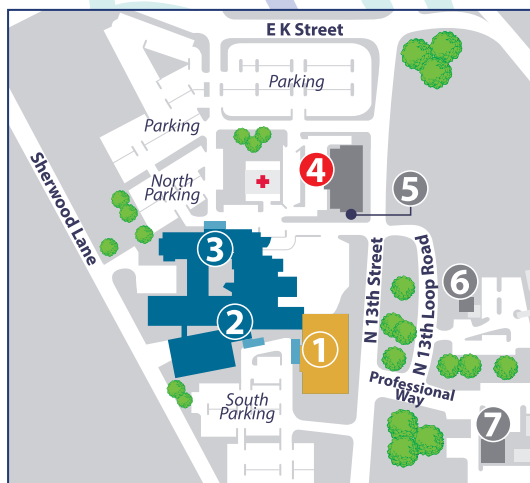
There will be some QR codes that you can scan with your phone. These will open a YouTube video or a website.

1. Open the Camera app
2. Point the camera at the code
3. A link should pop up on your screen.
Click on it!

If that didn't work and you have a phone that isn't an iPhone, go to the Camera app and click the settings button at the top left. Click on it and enable "Scan QR codes."

Alternatively, you can download the Google Lens app from the Play Store.

If you prefer to type in the internet link, you'll find it below each QR code.



- | | |
|--|---|
| 1 Mason Clinic Entrance | 4 Rehabilitation Services, Cedar Building |
| 2 Mason General Hospital - Main Entrance | 5 Vista Oncology, Cedar Building, Suite 100 |
| 3 Emergency Entrance | 6 MGH Anticoagulation Clinic |
| | 7 Patient Financial Advocates |

901 Mountain View Drive • PO Box 1668
Shelton, WA 98584

360.426.1611 • www.masongeneral.com

Public Hospital No. 1 of Mason County, Washington, d.b.a. Mason Health complies with applicable Federal civil rights laws and does not discriminate on the basis of race, color, national origin, age, disability, or sex (consistent with the scope of sex discrimination described at 45 CFR § 92.101(a)(2)) or sex, including sex characteristics, including intersex traits; pregnancy or related conditions; sexual orientation; and gender identity. Mason Health does not exclude people or treat them less favorably because of race, color, national origin, age, disability, or sex.

1/2024

United Community,
Empowered People,
Exceptional Health



Mason Health


Mason General Hospital • Mason Clinic

WHAT IS AUTISM?


What you need to know

Mason Health
Pediatrics, School
Medical Autism
Review Team
(SMART)


DID YOU KNOW?

 As of 2024, 1 in 36 children in the United States has Autism (ASD)

It is present in all racial and ethnic groups, and is 4x more prevalent in boys than in girls. It is more common than one may think!

 There are many peer-reviewed studies showing no correlation of vaccines and autism

An autism diagnosis simply shows up at the same age that vaccines are usually administered. Two decades of meticulous research has provided a firm foundation of understanding that there is no link between vaccines and autism.

 Instead, genetics and environmental factors have been discovered to be linked to autism.

Some studies have claimed that 60-90% of the risk of autism comes from genetics. Other factors are linked, such as advanced parental age, prenatal exposure to pollution, extreme prematurity or low birth weight, and birth complications leading to low levels of oxygen to the baby's brain.

Further information and research articles can be found below:

Signs of Autism



What Causes Autism?



LEARNING ABOUT AUTISM

Follow the video trail to learn more about autism and what you can do.



April 2 was declared Autism Awareness Day to contribute to the cause.



The longest video in this brochure is less than 5 minutes long!

- The **first** two videos show what autism is like cinematically.
- The **next** two videos explain autism to help you understand it better.
- The **last** two videos give important facts about autism as well as clearing up common misconceptions about autism.

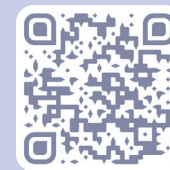
START HERE!

"THE BIG DAY"

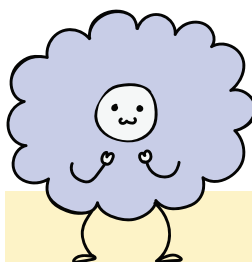


<https://www.youtube.com/watch?v=hVLGS3ISvIM>

"THE WORLD OF AUTISM"



<https://www.youtube.com/watch?v=7wbPJ0IY4Sc>



"OUTDATED MYTHS"



https://www.youtube.com/watch?v=-wPxKRyIR_g

Each person with autism faces different challenges.

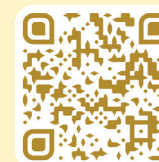


"AUTISM FACTS"



https://www.youtube.com/watch?v=pt_3d0JvDM4

"WHAT IS AUTISM?"



<https://www.youtube.com/watch?v=EHZPO0I9x00>

"UNDERSTANDING AUTISM"



https://www.youtube.com/watch?v=3XgU_lI5Fw0

