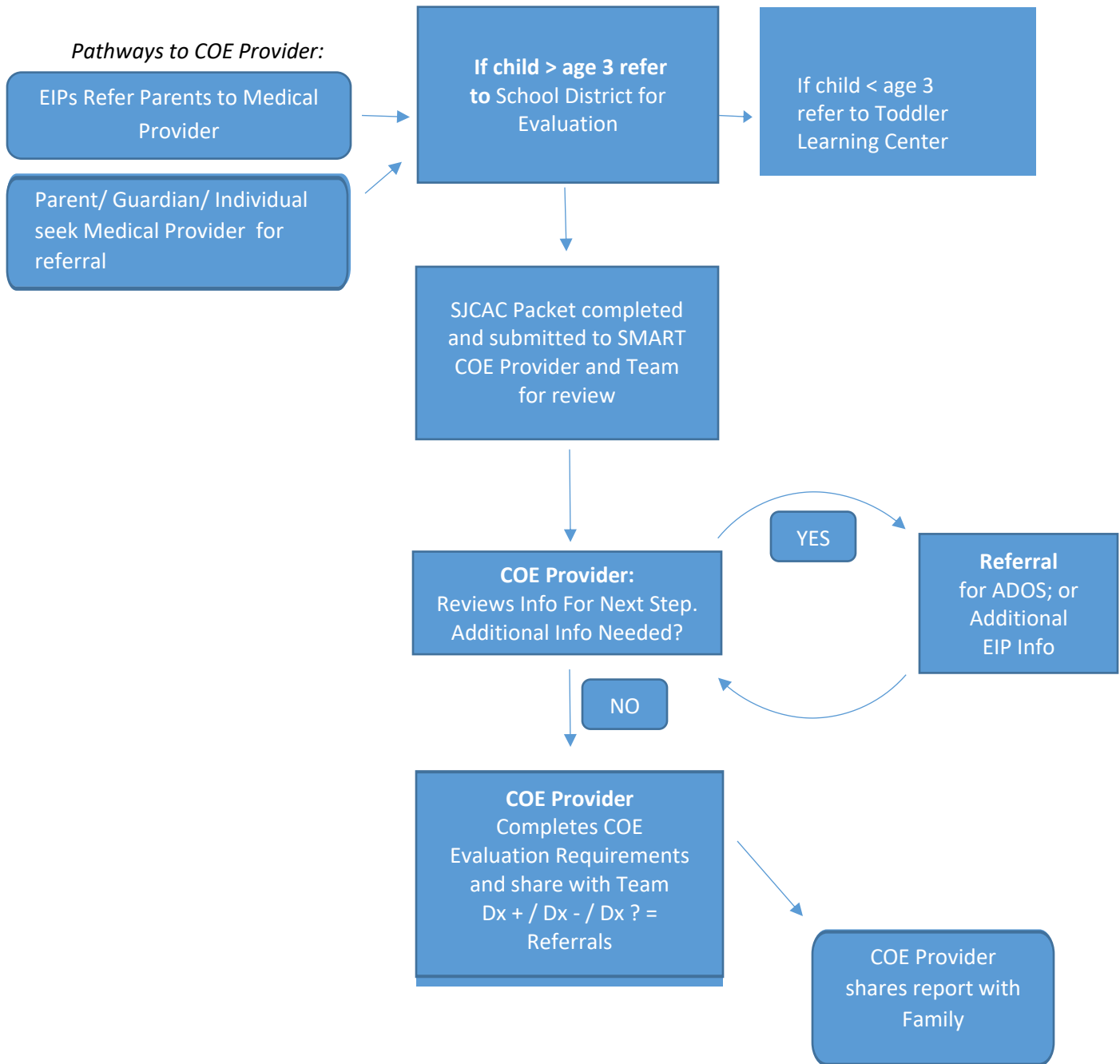


San Juan County Center of Excellence (COE) Autism Evaluation Process Overview



COE Provider – A medical practitioner who has been formally trained to conduct COE evaluations

EIP – Early Intervention Provider. This may be the local Birth-3 provider, therapy clinic, or local school district’s special education preschool program

What is a COE, “Center of Excellence”?

A Center of Excellence is any medical practice, psychology practice, or multidisciplinary assessment team that has received the COE training from the Health Care Authority or has been judged by the HCA to be qualified to write a prescription for ABA services. There are many different ways for children and youth to get a diagnosis of autism. In order for a child or youth to be eligible for ABA therapy through Apple Health/Medicaid, a recognized Center of Excellence (COE) must conduct a comprehensive evaluation, and write an order for Applied Behavior Analysis therapy per HCA protocol, within the last two years.

Notes: