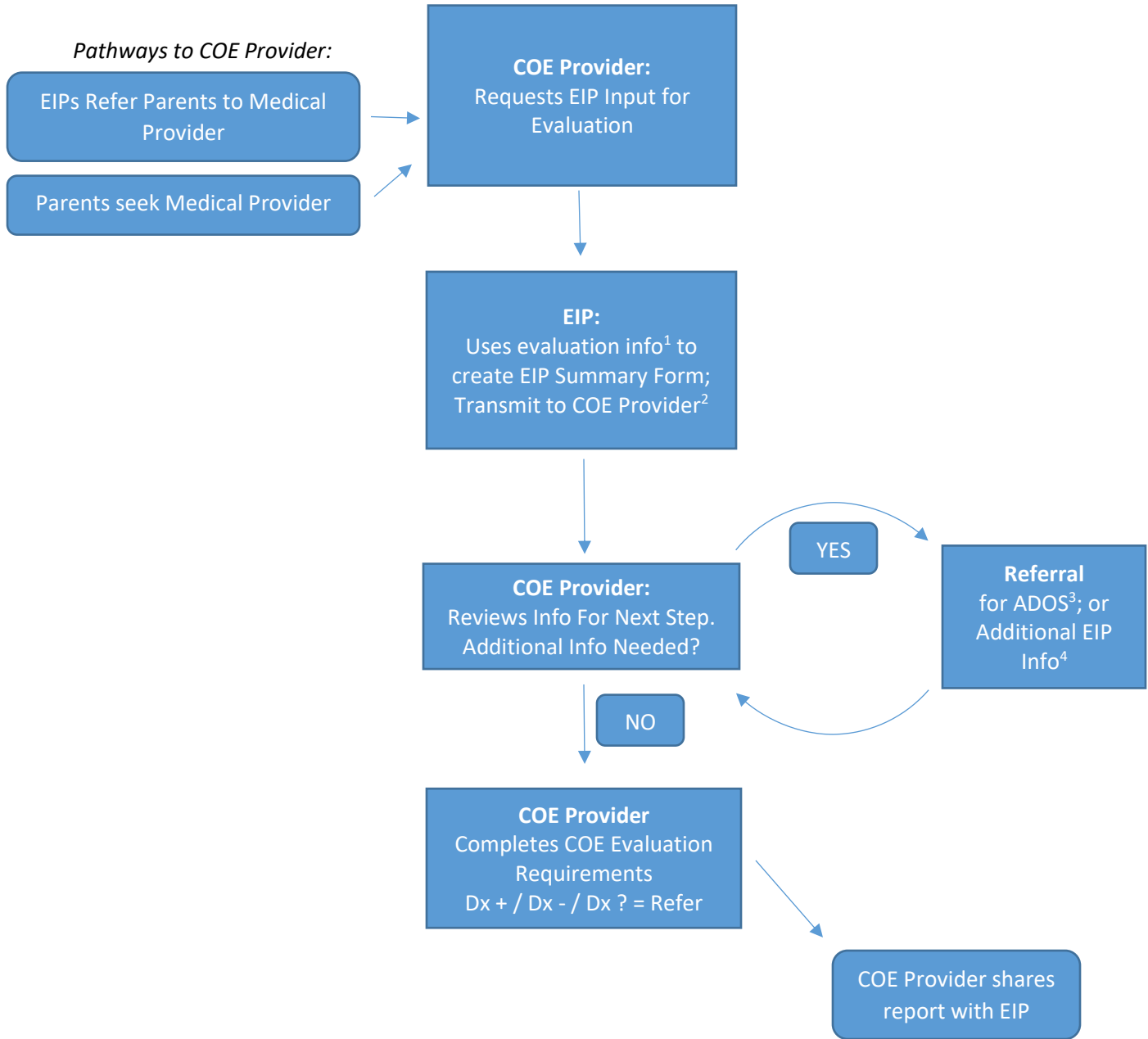


## Skagit County Center of Excellence (COE) Autism Evaluation Process Overview



**COE Provider** – A medical practitioner who has been formally trained to conduct COE evaluations

**EIP** – Early Intervention Provider. This may be the local Birth-3 provider, therapy clinic, or local school district’s special education preschool program

**What is a COE, “Center of Excellence”?**

A Center of Excellence is any medical practice, psychology practice, or multidisciplinary assessment team that has received the COE training from the Health Care Authority or has been judged by the HCA to be qualified to write a prescription for ABA services. There are many different ways for children and youth to get a diagnosis of autism. In order for a child or youth to be eligible for ABA therapy through Apple Health/Medicaid, a recognized Center of Excellence (COE) must conduct a comprehensive evaluation, and write an order for Applied Behavior Analysis therapy per HCA protocol, within the last two years.

**Notes:**

- (1) Early Intervention Providers (EIP) conduct their standard process upon referral for services. Information from this process is summarized for communication with Medical Provider for purpose of COE evaluation. The “Provider Evaluation Information to COE” form is used for this purpose.
- (2) EIPs and Medical Provider will have obtained parent consent to exchange information
- (3) ADOS – the Autism Diagnostic Observation Schedule is a common assessment used as part of a comprehensive evaluation for ASD. Currently Skagit County has two trained EIP professionals that can provide this assessment for the COE process.
- (4) If the COE provider needs additional information from the EIP, this will be communicated with the primary contact person at the EIP

